

CADES MILL BRIDGE  
CA. 1852  
HOWE TRUSS

WESTERN INDIANA COMMUNITY FOUNDATION

# FOUNDATION FORUM

ATTICA | COVINGTON | SOUTHEAST FOUNTAIN



SUMMER 2025 NEWSLETTER



# From the CEO's Desk

## *Fostering Growth: A Look at Our Achievements Together*

Over the past six months, your generosity has profoundly shaped our community. With your support, we've provided critical funds to nonprofits, empowered students with scholarships, and spearheaded leadership initiatives. Additionally, the creation of new endowment funds ensures a long-lasting legacy for future generations.



## *Strengthening Our Community through Targeted Grants*

Your contributions have fueled grants that uplift local nonprofit organizations and community-driven projects. These funds have gone toward programs addressing key community needs, ranging from youth engagement and educational opportunities to vital social services. Together, we've amplified their ability to make a transformative impact on countless lives.

(For more details, see pages 6 -9.)

## *Opening Doors to Higher Education through Scholarships*

Thanks to your unwavering support, bright and deserving students now have access to the resources they need to pursue their dreams. Each scholarship you've helped provide is not only a step forward for an individual, but a leap toward a brighter and more prosperous community.

(Visit [www.wicf-inc.org/scholarships](http://www.wicf-inc.org/scholarships) to see this year's recipients.)

## *Guiding the Future with Leadership Initiatives*

Our efforts in community leadership have been pivotal in identifying and addressing pressing needs. Through surveys and forums, we've gathered valuable insights from local voices, enabling us to tailor our strategies and maximize our collective impact.

## *Laying the Foundation for Tomorrow: Endowment Funds*

Endowment funds are the backbone of sustained community support. Because of your generosity, we've successfully launched 12 new funds, designed to provide perpetual support for key initiatives.

(Turn to pages 11 - 15 for highlights on these impactful new funds.)

## *A Heartfelt Thank You for Joining Us*

Your incredible generosity continues to pave the way for meaningful change in our community. Together, we're building a brighter, stronger future, one step at a time. Thank you for being an integral part of our journey—we can't wait to see what we'll accomplish next!

All my best,

A handwritten signature in dark ink that reads "Dale White". The signature is fluid and cursive, with the first name "Dale" being more prominent.

Dale A. White  
Chief Executive Officer

**"Helping People Improve Our Community"**



## Meet Your Board of Directors, Finance Committee Members, and Foundation Staff

We'd like to know you better, and we want you to know us, too.

Our Board of Directors is deeply committed to the vision of stimulating philanthropy to build a better community. They generously contribute their time and talents to ensure that the Community Foundation grows and prospers so that Fountain County can benefit, forever.

### **Attica Community Foundation**

*President -*  
Cindy Mason  
*Vice-President -*  
Kyle Mandeville\*  
*Secretary -*  
Nate Rosswurm

Carmie Berghoff  
Marsha Brown  
Elizabeth Cunningham  
Ann Harrison  
Bob Maus

### **Covington Community Foundation**

*President -*  
Megan Ellmore  
*Vice-President -*  
Raquel Stultz  
*Treasurer -*  
Kevin Martin

Kyle McGurk\*  
Taylor Powell\*  
Susan Reynolds  
Ryan Sowers  
Bob Wright\*

### **Southeast Fountain Community Foundation**

*President -*  
Mark Haas\*  
*Vice-President -*  
Marsha Orr  
*Secretary -*  
Irene Norman\*

Cheryl Carlson  
Cody Crowder  
George Deel\*  
Renee McGrady  
Dr. Mike Meade  
Toni Myers

### **Staff**

*Chief Executive Officer*  
Dale White

*Director of Finance*  
Nikki Chevront

*Director of Community Engagement (Grants & Scholarships)*  
Kim Eaton

*Director of Marketing & Communications*  
Taylor Marshall

*Office Assistant*  
Laura Hacquet

Individuals with an asterisk (\*) beside their name also serve on the Finance Committee.

Additional Finance Committee Members include Dale Brown, Jack Fenoglio, Lou Fenoglio, Amy Hay, and Rick Morgan



**Explore Fountain County**, a website ([www.explorefountaincounty.org](http://www.explorefountaincounty.org)) launched by the Western Indiana Community Foundation, offers visitors an immersive and inspiring look into what awaits them on a Fountain County visit. Visits to the site will make it easier than ever for travelers to discover activities, events, places to eat, drink, and stay overnight in Fountain County.

# Scholarship News

This year, we'll be distributing nearly **\$475,000 in scholarships** to about **175 students** across our communities.

These scholarships come from more than **130 different funds**, each one created by donors who want to make a difference. Awards vary in size—from **\$500 to full tuition and fees**—and no two scholarships are exactly the same.



Fountain County  
Lilly Scholar 2025 – Adalyn Small  
Attica High School

Some focus on:

- Financial need
- Community service or volunteer work
- Specific career or study goals
- High academic achievement (GPA)

Most are designed for graduating high school seniors, but we also offer scholarships for students who are already in college.



To see a listing of this year's recipients visit our website at [www.wicf-inc.org](http://www.wicf-inc.org).

## Thinking About Starting a Scholarship? We Can Help!

Are you—or someone in your family—thinking about starting a scholarship fund? Whether it's to honor a loved one, support a cause, or invest in the future of your community, WICF offers full-service support to help you make it happen.

### We'll guide you through:

- Choosing your scholarship criteria
- Promoting it to students
- Following all legal guidelines
- Sharing helpful financial aid info with families

### And we handle all the behind-the-scenes work:

- Application management and processing
- Reviewing applications and selecting winners
- Notifying applicants
- Sending out award payments
- Managing renewals
- Tracking student progress
- Promoting your scholarship each year
- Investing funds to help them grow over time

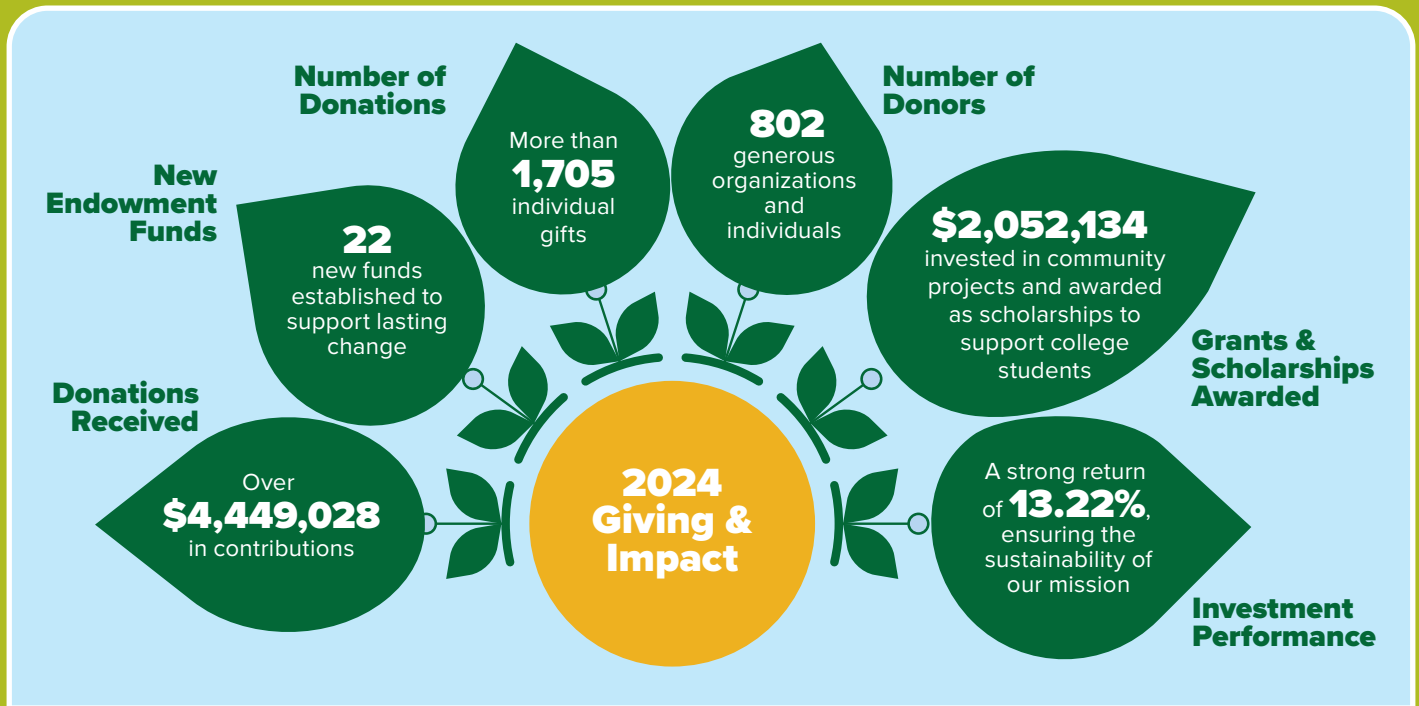
## Want to Learn More?

If you're a student, donor, or just curious about scholarships in our area, we'd love to talk. Call us at **(765) 793-0702** to set up a free consultation—no pressure, just helpful info.



# Financials At A Glance

As we reflect on 2024, we're overwhelmed with gratitude for the generosity and support of our donors and partners. Together, we accomplished incredible milestones:



Your support has made a difference in countless lives, and we're excited to build on this impact in 2025. Thank you for being a vital part of our mission to *Help People to Improve Our Community!*

**Did you know** that the following were the Foundation's investments returns for the following 1, 3, 5, 7 and 10 year periods?

**Year-to Date (3/31/2025): .03%**

- ▶ 1-Year (2024): 13.22%
- ▶ 3-Year (2022-2024): 6.98%
- ▶ 5-Year (2020-2024): 9.82%
- ▶ 7-Year (2018-2024): 9.11%
- ▶ 10-Year (2015-2024): 8.55%



The Foundation focuses on protecting the original donations it receives so they can support the community for years to come. Most donations (except pass-through funds) are invested, and the earnings from those investments are given out each year as grants to charities, scholarships for students, or other causes chosen by the donor.

Many donors set up special funds called Unrestricted or Community Funds. These funds allow the Foundation to decide how to use the earnings to best support local needs. Right now, the Foundation manages more than 58 of these funds (out of 375 total), and they generate over \$600,000 each year for community projects.

Want to make a difference that lasts? Visit our website at [www.wicf-inc.org](http://www.wicf-inc.org) or call (765) 793-0702 to learn how you can leave a lasting legacy in your community.



# Nonprofit Groups Share in Grants from Community Foundations

Several nonprofit and charitable groups shared in grants from the Attica, Covington and Southeast Fountain Community Foundations, all affiliates of the Western Indiana Community Foundation. Grant monies are made available by donations from caring individuals who want to make a difference by improving the quality of life for others.

The latest recipients are:

**Community Action Program of Western Indiana - \$3,400** to help families obtain the resources they need to provide a safe environment for their children based on the Home Safety Checklist



**Community Action Program of Western Indiana** – Left to right: Natasha Owen, Fountain County Early Head Start Family Advocate - Community Action Program of Western Indiana; Elly Benjamin, Fountain County Early Head Start Home Visitor - Community Action Program of Western Indiana; Toni McGowen, Early Head Start Family Services Specialist - Community Action Program of Western Indiana; Doc Sutherlin, Board Member - Vermillion County Community Foundation; Kim Eaton, Director of Community Engagement - Western Indiana Community Foundation

**Southeast Fountain School Corporation - \$3,000** to provide personalized academic jackets and chevrons to Fountain Central High School honor students at the Fall Academic Awards Night



**Southeast Fountain School Corporation** – Left to right: Renee McGrady, Board Member - Southeast Fountain Community Foundation; Sheena Blankenship, Administrative Assistant - Fountain Central High School; Cheryl Yager, Guidance Secretary - Fountain Central High School

**Veedersburg Friends of the Library - \$1,865** for annual distribution (payout) for its endowment fund

**Mount Hope Cemetery - \$9,815** for annual distribution (payout) for its endowment fund

**Hillsboro Volunteer Fire Department - \$15,000**

The Southeast Fountain and Covington Community Foundations have approved a \$15,000 grant to the Hillsboro Volunteer Fire Department to aid in constructing a new fire station.



**Hillsboro Volunteer Fire Department** – Left to right: Wesley Fishero, Fire Chief - Hillsboro Volunteer Fire Department; Cody Crowder, Board Member - Southeast Fountain Community Foundation; Cheryl Carlson, Board Member - Southeast Fountain Community Foundation; Toni Myers, Board Member - Southeast Fountain Community Foundation

**Fountain County Old Guard 2395 - \$4,000** for a digital sign that will be used to advertise community events



**Fountain County Old Guard 2395** – Left to right: Jeremy Claypool, Post Commander - Fountain County Old Guard 2395; Craig Stalter, Auxiliary President - Fountain County Old Guard 2395; Judy Hegg, Auxiliary Treasurer - Fountain County Old Guard 2395; Nancy Wagner, Fundraiser Coordinator - Fountain County Old Guard 2395; Bob Cates, Post Quartermaster - Fountain County Old Guard 2395



**Hillsboro Christian Academy - \$1,500** for iPads that students can use for testing and learning purposes



**Hillsboro Christian Academy** – Left to right: Valerie Vanaman, Administrative Teacher - Hillsboro Christian Academy; Stephanie Gleason, Administrative Secretary - Hillsboro Church of the Nazarene; Kim Eaton, Director of Community Engagement - Western Indiana Community Foundation

**Hillsboro Church of the Nazarene - \$600** to provide Covington residents age 60 and older with two nutritious and affordable meals each weekend from January through March 2025



**Hillsboro Church of the Nazarene** – Left to right: Kim Eaton, Director of Community Engagement - Western Indiana Community Foundation; Adam Vanaman, Youth Pastor - Hillsboro Church of the Nazarene



**Attica Elementary School** – Left to right: Vanessa Terrell-Stafford, 4th grade ELA teacher - Attica Elementary School; Sarah Riley, 5th grade ELA teacher - Attica Elementary School; Kim Eaton, Director of Community Engagement - Western Indiana Community Foundation

**Attica Elementary School - \$3,000** for their reading incentive program, which awards students from kindergarten through fifth grade for meeting their personal reading goals every nine weeks

**Covington Buddy Bags - \$877** for annual distribution (payout) for its endowment fund

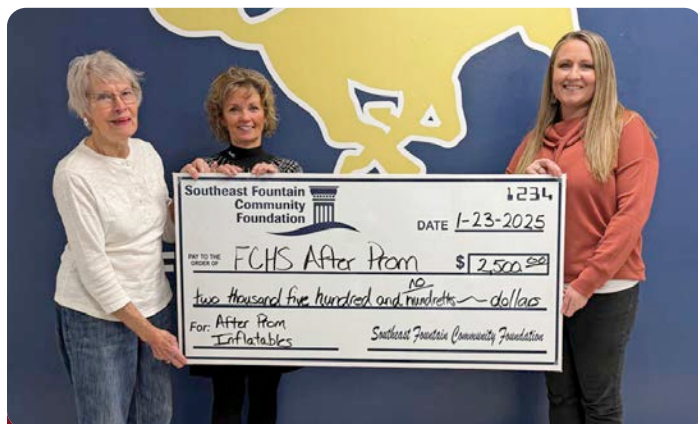
**Gideons International - \$1,485** for annual distribution (payout) for its endowment fund

**Covington Elementary School - \$2,490** to allow 1st and 2nd grade Covington students to take a field trip to The Harmony Theatre (Formerly Myers Dinner Theatre) for a live performance of Charlotte's Web



**Covington Elementary School** – Left to right: Emily Jackson, 1st grade teacher - Covington Elementary School; Lisa Hauck, 1st grade teacher - Covington Elementary School; Andrea Ragsdale, 1st grade teacher - Covington Elementary School; Carrie Sowers, 2nd grade teacher - Covington Elementary School; Carla Everett, 2nd grade teacher - Covington Elementary School; Sarah Dickerson, 2nd grade teacher - Covington Elementary School

**Fountain Central High School After Prom - \$2,500** to purchase inflatables for After Prom at Fountain Central High School



**Fountain Central High School After Prom** – Left to right: Irene Norman, Board Member - Southeast Fountain Community Foundation; Renee McGrady, Board Member - Southeast Fountain Community Foundation; Casey Hoagland, Committee Member - Fountain Central High School After Prom

(Continued on page 8)



# Grants from Community Foundations *(Continued from page 7)*

**Town of Pine Village - \$3,290** for annual distribution (payout) for its endowment fund

**Fountain Central High School - \$2,000** for the Class Cup competition, rewarding Fountain Central students for participating in events and activities, with the top class earning a trip to Indiana Beach



**Fountain Central High School** – Left to right: Irene Norman, Board Member - Southeast Fountain Community Foundation; Renee McGrady, Board Member - Southeast Fountain Community Foundation; Phil Shabi, Principal - Fountain Central High School; Jake Wolfe, Assistant Principal - Fountain Central High School

**Lower Mound Cemetery Association - \$1,398** for annual distribution (payout) for its endowment fund

**Covington High School - \$2,500** for new equipment for the golf team



**Covington High School** – Left to right: (Front Row) Members of the Covington Golf Team - Logan Hauck, Thomas Britt, Luke Holycross, Dylan McClain  
(Back Row) - Cam Davis, Cole Witsman, Andrew Wright, Jaxon Keller, Brett Holycross  
Not Pictured - Urban Roarks, Austin Stein, Henry Tanner, Kody Baker

**North Vermillion School Corporation - \$2,000**

Covington and Vermillion County Community Foundations combined resources to support 14 students from five area high schools as they compete in VEX RC High School Division robotics competitions, covering tools, equipment, registration, and travel.



**North Vermillion School Corporation** – Left to right: (Front row) - Paxton Rudisel, Titus Hammer, Ian Farley, Kayne Acton, Cody Waggle, Alexander Larson - Students from the Wabash River Career and Technical Education (WRCTE) Engineering and Automation Class  
(Back row) - Brody Goodrich, Andrew Thom, Owen Hazelwood, Grissom Cope, Andrew Maquet, Cotton Cordova, Students - Wabash River Career and Technical Education (WRCTE) Engineering and Automation Class

**Fountain County ARC - \$1,871** for annual distribution (payout) for its endowment fund

**Veedersburg First Church of Christ - \$8,590** from the Charles and Kathryn Howard Fund of the Southeast Fountain Community Foundation was awarded to restore the historic stained glass windows at the Veedersburg First Church of Christ



**Veedersburg First Church of Christ** – Left to right: Cheryl Carlson, Board Member - Southeast Fountain Community Foundation; Debra Morrett, Deborah Mills, Robin Curry, Window Restoration Committee - Veedersburg First Church of Christ



**Covington Easter Egg Hunt - \$1,500** for supplies associated with the annual Covington Easter Egg Hunt



**Covington Easter Egg Hunt** – Left to right: Quinn Lewandowski, 2024 Miss Sparkler; Madison Payne, 2024 Miss 4th of July; Remi Strawser, 2024 Miss Firecracker

**Veedersburg Revitalization Association - \$7,500** to develop a conceptual plan for Veedersburg Hub Park



**Veedersburg Revitalization Association** – Left to right: Lettie Keller; Madison Scott, Member - Veedersburg Revitalization Association; Kim Kalweit, President - Veedersburg Revitalization Association; Doug Wallace, Member - Veedersburg Revitalization Association; Kim Eaton, Director of Community Engagement - Western Indiana Community Foundation; Cheryl Carlson, Board Member - Southeast Fountain Community Foundation

**Attica Main Street - \$5,000** for supplies associated with the 5th annual Dancing in the Streets Family Festival taking place on June 27th



**Attica Main Street** – Left to right: Marsha Brown, Board Member - Attica Community Foundation; Cindy Mason, President - Attica Community Foundation; Lexxi Haddock, President - Attica Main Street

**Food Pantries - \$30,000** from the Charles and Rosemarie Haas Fund of the Southeast Fountain Community Foundation was contributed to the Sugar Creek Resource Center (\$10,000), the Veedersburg Food Pantry (\$10,000), and the Covington Food Pantry (\$10,000) for the holiday season



**Veedersburg Food Pantry** – Left to right: (Front Row) Donna Stockdale, Dale Keeling, Beverly Keeling, Richard Florey, Tina Florey - Volunteers for the Veedersburg Food Pantry (Back Row) Cheryl Carlson, Board Member - Southeast Fountain Community Foundation; Irene Norman, Board Member - Southeast Fountain Community Foundation; Kathy Gillespie, Julie Miller, Debbie Richey, Don Richey, Virgel Moss, Lowell Stockdale, Cheryl Harshbarger, Martha Carter - Volunteers for the Veedersburg Food Pantry



**Covington Food Pantry** – Left to right: Geoff Hybarger, Volunteer - Covington Food Pantry; Taylor Marshall, Director of Marketing and Communications - Western Indiana Community Foundation



**Sugar Creek Resource Center** – Left to right: Natalie Newnum, Special Education Teacher - Parke Heritage Middle School; Irene Norman & Toni Myers, Board Members - Southeast Fountain Community Foundation; AJ Thompson & Leland Bowling - Students - Parke Heritage Middle School; Jean Ann Craycraft, Director - Sugar Creek Resource Center

# New Grant Guidelines

The WICF Board of Directors plays a vital role in ensuring the Foundation's grants have the greatest possible impact on our community. Most grants are funded through Unrestricted Funds, which address a wide range of community needs. Depending on the grant size, applications are reviewed monthly, quarterly, or semi-annually. Each application undergoes thorough evaluation and research by the respective Board and WICF staff. It is important to note that each affiliate within WICF maintains its own funds for grantmaking.

To better serve our community and ensure a fair and efficient review of grant requests, we have transitioned our 2025 grant application and review process to a structured three-tiered grant cycle process. This involves new grant applications and review processes.

The new grant cycles are:

## Rapid Response Grants

(Grants less than \$2,500)



- ▶ Applications are reviewed monthly.
- ▶ Applications Due: 15th of each month
- ▶ Review Period: Month following the application deadline
- ▶ Notification of Award: Same month as review

## Impact Grants

(Grants \$2,500-\$7,500)



- ▶ Applications are reviewed quarterly.
- ▶ Applications Due: January 15, April 15, July 15, October 15
- ▶ Review Period: February, May, August, November
- ▶ Notification of Award: March, June, September, December

*\*We recommend a conversation with staff to discuss your project before submitting your application if applying for a grant between \$2,500-\$7,500.*

## Legacy Grants

(Grants \$7,501+)



- ▶ Applications are reviewed semi-annually.
- ▶ Submit a letter of intent by: February 15, August 15
- ▶ Applications Due: April 15, October 15
- ▶ Review Period: May, November
- ▶ Notification of Award: June, December

*\*Submit a letter of intent.*

*\*A presentation to the Board of Directors of the respective Foundation affiliate and staff is required.*



# New Funds

The endowment funds listed below have recently been established by local organizations, businesses, and/or caring citizens. Any individual, business, or organization can establish a fund and/or contribute to an existing fund at any time.

Donations made to these endowment funds are invested and a portion of the earnings is used to award grants to community organizations and/or to award scholarships to students for their post-high school education. Donations can be made in a variety of forms including gifts of cash, stock, real estate, life insurance, and charitable bequests.

Endowment funds can be established in honor or memory of loved ones for as little as \$1,000. Payouts ("distributions") from endowment funds begin when the fund has reached \$10,000 in cumulative donations and has been invested for one full calendar year.

Here is a listing of the most recent endowment funds established through the *Western Indiana Community Foundation*.

## Robin and Peg Montgomery Scholarship Fund

Robin and Peg Montgomery have established the **Robin and Peg Montgomery Scholarship Fund** through the Southeast Fountain Community Foundation, an affiliate of the Western Indiana Community Foundation. This scholarship will benefit eligible Fountain Central High School students residing in Jackson and Richland Township.

Robin and Peg Montgomery have a special connection to Fountain County. Robin graduated from Richland High School in 1964, and Peg was part of Fountain Central High School's very first graduating class. Though their careers took them beyond Indiana, they've stayed close to their roots, owning property in Jackson Township and cherishing the lasting relationships that they share with family and friends in the area.



Contributions to the Robin & Peg Montgomery Scholarship Fund are tax-deductible and can be made online at [www.wicf-inc.org](http://www.wicf-inc.org) or mailed to: *Southeast Fountain Community Foundation, ATTN: Robin & Peg Montgomery Scholarship Fund, PO Box 95, Veedersburg, IN 47987.*



## Steve and Karen Milligan Fund

Steve and Karen Milligan established the **Steve and Karen Milligan Fund** through the Attica Community Foundation, an affiliate of the Western Indiana Community Foundation. This fund will provide ongoing support to the Williamsport-Attica Area Senior Center.

Steve, a lifelong resident of Warren County, farmed for 50 years, while Karen dedicated 40 years to teaching at Attica Elementary School. Together, they are active community members, volunteering at the ASK Food Pantry and mobile food trucks. Steve also served on the Warren County 4-H Council, and Karen is involved with groups such as Tri Kappa, Friends of the WPLLX, and the St. Francis Xavier Ladies' Guild. Her current role as president of the Senior Center Board inspired the couple to establish this fund to enhance the lives of seniors in their community for years to come.

Some of the activities the fund will help cover may include but are not limited to the center's day-to-day operations, including personnel costs, administrative expenses, and facility maintenance. It may also provide funding for programs such as exercise classes, card games, bingo, educational sessions on senior issues, and group outings, ensuring the center remains a valuable resource for the community.

Contributions to the Steve and Karen Milligan Fund are tax deductible and can be made online at [www.wicf-inc.org](http://www.wicf-inc.org) or mailed to: *Attica Community Foundation, ATTN: Steve and Karen Milligan Fund, PO Box 161, Attica, IN 47918.*

(Continued on page 12)

# New Funds

(Continued from page 11)

## Help-A-Teacher Fund

The Attica Consolidated School Corporation, in partnership with the Attica Community Foundation, is thrilled to announce the **Help-A-Teacher Fund**, a new initiative to support classroom teachers in the district.

This fund helps alleviate the financial challenges educators face when purchasing supplies out of pocket. Teachers can use the funds for essential items like books, paper, writing tools, arts and crafts materials, online resources, cleaning supplies, and more! Fund allocation will be overseen by the Superintendent of the Attica Consolidated School Corporation, in partnership with school principals and teachers, ensuring resources are used effectively to meet classroom needs.

Contributions to the Help-A-Teacher Fund are tax deductible and can be made online at [www.wicf-inc.org](http://www.wicf-inc.org) or mailed to: Attica Community Foundation, ATTN: Help-A-Teacher, PO Box 161, Attica, IN 47918.



## Fountain County Historic Preservation Fund

In partnership with the Western Indiana Community Foundation, the Historic Landmarks Foundation of Indiana has established the **Fountain County Historic Preservation Fund** in honor of John Shepard Cottrell (1938-2021), a native of Fountain County.

This fund will support the preservation of historically significant buildings, landscapes, and artifacts across the county, ensuring that our cultural heritage is protected for future generations.

John Cottrell, a nationally recognized interior designer, restored local landmarks like the Attica Presbyterian Church (the “Old Church at Cottrell Village”) and the Norman and Maria Brown House, which became the heart of Cottrell Village, a community event space. His legacy lives on through the Indiana Landmarks organization, which now oversees the preservation of these sites.

The fund will prioritize supporting the upkeep of the Old Church at Cottrell Village as long as it is maintained by Fountain County Landmarks.

Contributions to Fountain County Historic Preservation Fund are tax deductible and can be made online at [www.wicf-inc.org](http://www.wicf-inc.org) or mailed to: *Western Indiana Community Foundation, ATTN: Fountain County Historic Preservation Fund, PO Box 175, Covington, IN 47932.*

## Attica Student Meal Assistance Fund

The Attica Consolidated School Corporation, in partnership with the Attica Community Foundation, has established the

**Attica Student Meal Assistance Fund** to help alleviate unpaid meal balances for students.

This fund is designed to eliminate barriers to accessing nutritious meals at school, ensuring that no student feels stigmatized or distracted due to an inability to afford breakfast or lunch. The fund promotes fairness, respect, and a supportive learning environment for all students.

Contributions to the Attica Student Meal Assistance Fund are tax deductible and can be made online at [www.wicf-inc.org](http://www.wicf-inc.org) or mailed to: *Attica Community Foundation, ATTN: Attica Student Meal Assistance Fund, PO Box 161, Attica, IN 47918.*





## Duane and Phyllis Woodrow Scholarship Fund

The **Duane and Phyllis Woodrow Scholarship Fund** was established to honor the legacy of two lifelong Fountain County residents whose unwavering commitment to family, faith, and community has left a lasting impact. Duane, a dedicated farmer and youth sports advocate, and Phyllis, a beloved teacher and active community volunteer, built a life rooted in service and kindness. This scholarship celebrates their outstanding character and provides a way for their family to give back to the community for generations to come.

Awarded annually to a Fountain Central High School senior, the scholarship recognizes students who demonstrate hard work, faith, community involvement, and a positive impact on others—values that have defined Duane and Phyllis's lives. Applicants must reside in Fountain County, maintain strong academic performance, and submit letters of recommendation highlighting their character and contributions. Through this scholarship, the Woodrow family continues to inspire young people to achieve greatness and serve their community with integrity.

Contributions to the Duane and Phyllis Woodrow Scholarship Fund are tax deductible and can be made online at [www.wicf-inc.org](http://www.wicf-inc.org) or mailed to: *Southeast Fountain Community Foundation, ATTN: Duane and Phyllis Woodrow Scholarship Fund, PO Box 95, Veedersburg, IN 47987.*



## Attica Community Scholarship Fund

The **Attica Community Scholarship Fund** was established for a worthy student from Attica High School. The applicant(s) must be a resident within the Attica School Corporation District for twenty-four months prior to the application date. The applicant(s) must be accepted as a full-time (minimum 12 hours) student at any two or four-year public or private college or university technical/trade school or community college located in the United States.



One scholarship will be awarded a year. Selection is based on the following criteria: academic performance, school activities and/or work, volunteerism, letters of reference, responses to essay questions, and financial need.

Contributions to the Attica Community Scholarship Fund are tax deductible and can be made online at [www.wicf-inc.org](http://www.wicf-inc.org) or mailed to: *Attica Community Foundation, ATTN: Attica Community Scholarship Fund, PO Box 161, Attica, IN 47918.*



## Mark, Susan, and Matthew Milach Unrestricted Fund

The family of the late Mark, Susan (Bossaer), and Matthew Milach have established an endowment fund through the Covington Community Foundation to benefit the Covington area. Mark, a former band director at Covington Schools, and Susan, a dedicated nurse and community volunteer, both made lasting contributions to their community. Their son, Matthew, continued their legacy of service and dedication. Donations to this fund will honor their memory and support impactful initiatives in Covington, with a portion of the invested earnings annually assisting the community.

Contributions in memory of Mark, Susan, and Matthew Milach are tax deductible and can be made online at [www.wicf.org](http://www.wicf.org) or mailed to: *Covington Community Foundation, ATTN: Mark, Susan, and Matthew Milach Unrestricted Fund, PO Box 175, Covington, IN 47932.*

*(Continued on page 14)*

# New Funds

(Continued from page 13)

## Attica Firefighters Fund

The Attica Fire Department has established a permanent endowment fund through the Attica Community Foundation to provide long-term support for its fire and rescue services. This fund will help ensure the department has the resources it needs to continue protecting and serving the community well into the future.

Support from the fund may assist with a variety of needs, such as public safety services, community education, and volunteer firefighter training. It can also help with regular operating costs like facility expenses, staff development, and outreach efforts. Additionally, the fund may be used to launch new programs or cover capital expenses, including equipment purchases and facility upgrades.

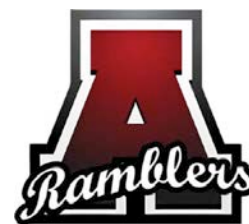
This endowment offers a lasting way for individuals and organizations to support the vital work of the Attica Fire Department and invest in the safety and well-being of the community for generations to come.

Contributions to the Attica Firefighters Fund are tax deductible and can be made online at [www.wicf-inc.org](http://www.wicf-inc.org) or mailed to: *Attica Community Foundation, ATTN: Attica Firefighters Fund, PO Box 161, Attica, IN 47918.*



## Attica High School Class of 1973 Unrestricted Fund

The classmates of Attica High School's Class of 1973 have established a lasting fund to celebrate their class and ensure its legacy is remembered for generations. This fund also serves as a meaningful way to honor and memorialize classmates who are no longer with us, preserving their memory in a lasting way. Right now, donations to this fund are being matched \$2: \$1 through June 30, 2025.



Every year, the Attica Community Foundation will use the earnings from this fund to award grants that benefit the Attica community.

Contributions to the Attica High School Class of 1973 Unrestricted Fund are tax deductible and can be made online at [www.wicf-inc.org](http://www.wicf-inc.org) or mailed to: *Attica Community Foundation, ATTN: Attica High School Class of 1973 Unrestricted Fund, PO Box 161, Attica, IN 47918.*

## Bob and Roberta Cunningham Scholarship Fund

The **Bob and Roberta Cunningham Scholarship Fund** was created to support deserving students graduating from Covington High School. Eligible applicants must be seniors at Covington High School and residents of either Fountain or Warren County, Indiana.

Applicants must also be accepted as full-time students at a two-year or four-year public college or university within the United States. Preference will be given to students majoring in Entrepreneurship or those planning to pursue a career as a small business owner.

One scholarship is awarded annually, with the first scholarship awarded in 2026. Selection is based on several factors, including community and volunteer service activities, letters of reference, financial need, school and work activities, and academics/GPA/class rank.

Contributions to the Bob and Roberta Cunningham Scholarship Fund are tax deductible and can be made online at [www.wicf.org](http://www.wicf.org) or mailed to: *Covington Community Foundation, ATTN: Bob and Roberta Cunningham Scholarship Fund, PO Box 175, Covington, IN 47932.*







## Robert & Phyllis DeSutter Unrestricted Fund

The **Robert & Phyllis DeSutter Unrestricted Fund** has been established through the Western Indiana Community Foundation to benefit the Southeast Fountain area.

Robert, a WWII veteran and farmer, and Phyllis, a longtime teacher, were residents of Richland Township and deeply involved in the community. This fund will honor their legacy by supporting impactful projects in the Southeast Fountain community for years to come. Donations are invested, with a portion of the earnings going toward innovative local initiatives.

Contributions for the Robert & Phyllis DeSutter Unrestricted Fund are tax deductible and can be made online at [www.wicf-inc.org](http://www.wicf-inc.org) or mailed to: *Southeast Fountain Community Foundation, ATTN: Robert & Phyllis DeSutter Unrestricted Fund, PO Box 95, Veedersburg, IN 47987.*



## Now is the perfect time to support the future of Attica!

Thanks to the Lilly Endowment Inc.'s Gift VIII Match Initiative, every donation made to an Attica Unrestricted Fund through the Western Indiana Community Foundation will be matched \$2 for every \$1 you give—but only until June 30, 2025. That means a \$100 donation becomes \$300 to help fund projects in Attica.

Unrestricted Funds are incredibly important. They allow the community to respond to the most pressing local needs, from education and health programs to parks and recreation, youth and senior initiatives, economic development, and more. These funds help make great things happen—now and for future generations.

Our goal is to raise \$125,000 by the deadline. Your gift, big or small, can make a lasting impact.

Whether you want to give the Attica Unrestricted Fund or start your own fund, we're here to help you make it happen.



### Scan the QR code to give back!

Your donation stays local, supporting future community projects and grantmaking efforts in the Attica community.

# THE LEGACY SOCIETY

## Legacy Gifts

We gratefully recognize the following individuals who have remembered the Community Foundation with a bequest from their estate or who have indicated that the Foundation has been named as a future beneficiary of their estate. The special community benefactors have enriched the lives of others through their concern for the charitable needs of the community. If you have included the Foundation in your estate plan, please consider becoming a member of our Legacy Society. We would sincerely appreciate the opportunity to pay tribute to your thoughtfulness.

Juanita “Sue” Allison

Lori Bever Bagley

Deborah Barnhart

Merrill Brown

Nancy Bourne

Tom Carney

Don & Peggy Clark

Jim & Wanda Clawson

Evan Cork

Dr. Roger Duncan

Dr. James Fenters

Warner & Carol Freese

Jean Paul “Frenchie” Gondrum

Vincent & Mildred Grogg

Linda Holycross

Erwin & Ann Johannes

Edward A. Larson, Jr.

Carter & Olive Martin

Charles Remele

Bob & Melinda Shepherd

Randall G. Shoaf

John Stoup

Frances Wallace

Margaret Bogart Walters

Dale & Valerie White

Mariah & Sean Zabriskie



## How Can You Benefit?

It's easy to find out. Simply write, call, or email us and we'll be happy to answer any of your questions about the IRA Charitable Rollover, gifts of stock, the Legacy Society, or advantages of other planned giving options.



# Planning for the Future:

## What You Need to Know About Estate Planning

Ever wondered what happens to your stuff—like your money, house, or even your favorite baseball card collection—after you're gone? That's where estate planning comes in. It may sound like something only adults or super-rich people worry about, but it's really just a smart way for anyone to make sure their things go where they want them to.

Let's break it down into some simple questions and answers.

---

### **Q: What *is* estate planning, anyway?**

**A:** Estate planning is all about making a plan for your money, your property, and your personal belongings—both now and in the future. It also lets you choose who should get what when you're no longer around. It's kind of like making a treasure map, but instead of finding gold, people find what you've left behind for them.

---

### **Q: What happens if someone doesn't make an estate plan?**

**A:** If you don't make a plan, the government will decide for you. Sounds a little scary, right? Without your input, the state:

- Can't choose the right guardian for your kids.
- Doesn't know who needs help the most.
- Won't give anything to your favorite charity or friends outside the family.

So, it's way better to make your own plan!

---

### **Q: How do you even start an estate plan?**

**A:** It all starts with the 4 P's:

1. **People** – Make a list of the people you care about and want to help. This could include family, friends, or even a favorite charity.
  2. **Property** – Write down what you own: money, a house, a car, jewelry, insurance policies, and so on.
  3. **Plans** – Think about how you want to share your things. Who needs what? What would make the biggest difference in their life?
  4. **Planners** – Talk to the adults who can help you get it all organized—like a lawyer, financial advisor, or accountant.
- 

### **Q: Can I include donations to charities in my estate plan?**

**A:** Yes, you can! You might want to help your church, school, or a cause you care about. You can do this after your family is taken care of. There are many ways to give, like:

- Leaving a gift in your will.
  - Donating from a retirement plan or life insurance.
  - Creating a trust that helps others even after you're gone.
- 

### **Q: Can I make a gift while I'm still alive and get something back?**

**A:** Absolutely! With certain types of gifts, you can:

- Get regular payments (kind of like a paycheck).
- Enjoy tax savings.
- Help your favorite cause at the same time.

These gifts are a smart way to do something kind for others and benefit yourself, too.

---

## Why It Matters

You might not need an estate plan just yet—but it's never too early to understand how important it is. One day, you'll have things worth protecting and people or causes you care about. Having a plan in place helps make sure everything goes where you want it to.

When you're ready, there are professionals who can help you (and your family) build a plan that makes a difference.

---

Want to talk more about how giving can be part of your plan? We'd be happy to help you, and your advisors create a legacy you can be proud of.

# HOW does the Western Indiana Community Foundation work?

It starts with  
**YOU**  
the donor



An individual, family, business or charitable organization makes a tax-deductible gift of cash, securities, real estate or other property.

With a  
**PASSION**  
for your community



Your gift creates or adds to a charitable fund to benefit causes important to you now or in the long term.



human/animal  
welfare



education



human  
services



environment

... any cause important to you which better our community

Whose **GIFTS**  
are used



No gift is too small

- cash
- securities
- real assets
- retirement funds
- insurance
- bequests

To **CREATE & BUILD**  
funds for the community



Funds are invested prudently for long term growth, overseen by an investment committee of local professionals.

**DISTRIBUTIONS** from the fund fulfills your charitable passions through grants to charitable organizations and/or scholarships

The nonprofit projects, organizations and student scholarships your fund supports strengthen community while creating your lasting legacy of giving.

**ALL FUNDS** are governed by an agreement between WICF and the donor.

- unrestricted • donor advised • designated • agency • field of interest • scholarships

The  
**WICF**  
team



- Meets with donors to determine which type of fund is right for their goals
- Assists donors with giving complex gifts
- Helps donors grow funds
- Offers expertise on community needs
- Preserves donors wishes in perpetuity
- Provides regular statements on fund activity



# Memorial & Honor Giving

*Memorial* gifts provide a way for families and friends to remember their loved ones. *Honor* gifts are a way to celebrate a life, an anniversary, a birthday, or to simply say “thank you” for special things they have done for the donors or others.

We will acknowledge your gift to the appropriate family on the day it is received. The amount will not be mentioned. You will also receive an acknowledgement of your gift. Each donation is credited to the appropriate Foundation or fund as requested by the donor. We received the following Memorial and Tribute gifts from from October 1, 2024, to March 31, 2025. The name of the person being memorialized or honored is in **bold**.

## IN MEMORY OF

### **Rick Abernathy**

Stanley & Tonya Abernathy

### **Scott Abernathy**

Stanley & Tonya Abernathy

### **Millard & Rosalie Allen**

Gary & Deanna Demes

### **Jim Anderson**

Nancy Tillotson  
Country Ace Hardware-Colorado

### **Richard Ashton**

Rick & Amy Ashton  
Baird Foundation, Inc.

### **Terry Badger II**

Anonymous  
David & Terry Cummins  
David Elmer Cummins, Jr.  
Cynthia Edwards  
Dohn & Jamie Hutson  
Randy & Casey Jumps  
Jeff & Beth Mason  
Tom & Jan McGurk  
Larry & Betsy McKee  
and Zaydin Marcinko  
Bob & Christina Seward  
Mark & April Switzer  
Dale & Valerie White  
Indians, Inc. Victory Field

### **Richard “Tony” Bennett**

Sharon Bennett

### **Jerry Boles**

Mike & Amy Maynard  
Shawn & Vicki Quigley

### **Judy Bowman**

Rodger & Sue Foster

### **Catherine E. Bracken**

Bob Shepherd  
Rick & Janet Turpin

### **J. Merrill Buck**

Rick Kellam & Carol Myers

### **Barbara Bushue**

Wabash Township Birthday Club

### **Don Campbell**

Shirley L. Campbell

### **Gladys Carpenter**

Rodger & Sue Foster

### **Lloyd Chambers**

Scott & Nancy Wallace

### **Jeff Chapman**

Janet Chapman

### **Lea Chapman**

Janet Chapman

### **Tom Chapman**

Janet Chapman

### **Jessica Coats**

Brad Coats  
Steve & Brenda McIntosh

### **Monica Van Vactor Coffing**

Shirley L. Campbell  
Penny Van Vactor

### **Steve Coffing**

Sandra McKinney

### **Ron Colson**

Esteleen McDonald  
Marsha Orr  
Dale & Valerie White

### **Carl Cook**

Rodger & Sue Foster

### **Marcia Cooper**

Lowell & Betty Osborn

### **Bob Cunningham**

Steve & Nancy Hughes  
Kim Johnson  
Barb Macy  
Mark & April Switzer  
Dale & Valerie White

### **Gary Davis**

Dale & Valerie White

### **Doug Denhart**

Greg Denhart  
Kevin & Tina Hari

### **Judy Dewlen**

Kyle & Denise Crowder  
Dwight & Linda Galloway  
Allen & Shirley Lueking  
Steve & Elizabeth Sprague  
Dale & Valerie White

### **Julia Dotson**

Tom & Judy Booe

### **Marvel Dunham**

Dean Dunham

### **Judy Ashton Ferrell**

Rick & Amy Ashton

### **Terry Field**

Barbara Macy

## **Benton Cooper Fishero**

Jeff & Michele Fishero

## **Bradley Fishero**

Jim & Jane Link  
Linda Zeller

## **John Foster**

Fred & Georgia Phelps

## **Tom Frey**

Darrell & Nyanne Applegate  
Hank & Marsha Bilsland  
Bill & Dawn Blake  
Linda Bodine  
Shirley L. Campbell  
Jim Clawson  
Kurt, Shelley, & Nick Conklin  
John & Dianne Cotten  
Buddy & Janet Crowder  
Mike & Nancy Crowder  
Jean Cunningham & Family  
Jennifer Dinsmore  
Warner & Carol Freese  
Susan Henderson  
Dick & Sue Holmes  
Larry & Pam Korte  
Margo Lewis  
Jeff & Beth Mason  
Tom & Jan McGurk  
Dick & Ann Minnette  
Owen & Donna Moudy  
Rick & Gina Plapp  
Tom & Rhonda Reed  
Bob Shelby  
Ed & Elizabeth Shew  
Mike & Raquel Stultz  
Scott & Nancy Wallace  
Dale & Valerie White  
Covington High School Class of 1965

## **John Fulton**

Nelson & Katrina Archer  
Frank & Teri Cheatham  
Paul & Ruth Cheatham  
Terry & Sandra Friedrich  
Hugh D. & Marilyn Fulton  
John & Laura Gardner  
Pat Grubb  
Edward & Sandra Jagiello  
Barbara Jameson  
Randy & Casey Jumps  
Lora Keilholz  
Rick & Christy Kidwell, Jr.  
Jerry & Rebecca Kincade

Paul & Karen Kirkpatrick  
Harold & Marilyn Layton  
Margo Lewis  
Janet K. Myers  
Louise Osgood  
Steve & Judi Paloncy  
Richard & Paula Partezana  
Paul & Sandra Seyfert  
Dale & Valerie White

## **Ryan Gayler**

Marsha Orr

## **Rosann Gooden**

West Lebanon Christian Church

## **Shiela Bossaer Gustus**

Greg & Betsy Bossaer

## **Alice Hathaway**

Veedersburg United Methodist Church

## **Joe & Alice Hathaway**

Carolyn Marshall

## **Carole Hines**

Amy Delp

## **Velmar Howard**

Sylvia Howard

## **Jack Hunter**

Thad & Kara Taylor

## **Carroll & Margaret Hushaw**

Nancy Tillotson

## **Barbara Hutson**

Marcia Boles  
Dale & Marsha Brown  
Andrew Harrison  
Chip & Tracy Harrison  
Glenda McDaniel  
Bob Shepherd  
Vickie Vass

## **Paul G. Ingersoll**

Jim & Jane Link

## **John & Madeline Ives**

Rick & Gina Plapp

## **Erwin & Ann Johannes**

Janet Haff  
Tim & Carol Voegele

## **Dave Johnson**

Nancy Tillotson

## **Marjorie Keeling**

David W. Clingan  
Dale & Valerie White

## **David Kent**

Scott & Nancy Wallace  
Dale & Valerie White

## **Douglas Krout, Jr.**

Jerry & Jackie Pope

## **Toby Lighty**

Linda Zeller

## **William & Lois Lynch**

Dorothy Engelman

## **Nona Martin**

Kingman High School Class of 1960

## **Todd Martin**

Nancy Tillotson

## **Gary W. McDaniel**

Glenda McDaniel

## **Esteleen McDonald**

Lisa Allen  
Susie Bolser  
Kenton & Sandy Campbell  
Anita Miles Cary  
Doug & Diane Davenport  
Melissa Duncan  
Ryan & Megan Ellmore & Family  
Trena Ezzati-Rice  
Scott & Cynthia Ferling  
Ross Foxworthy  
Warner & Carol Freese  
Gene & Joy Groce  
John & Mary Ellen Grubbs  
Mary Haefer  
Rex & Sandy Henthorn  
Jim & Janice Hershberger  
Brian & Adrienne Hoagland



Lee & Patti Kirkpatrick  
Bo & Diana Kreiling  
Gene Kurtz & Jan Culver  
Norma Lyons  
Marita Mahan  
Matt & Lisa Martin  
Terri Martin  
Renee McGrady  
Noel & Tamara McKinney  
Robin Nielsen  
Mike & Amy Parks  
Staci Payton  
Pam Poynter  
Leanna Rice  
Alisa Stewart-Merryman  
Craig & Paula Stockdale  
Lowell & Donna Stockdale  
Leon & Rita Thacker  
Mike & Allison Thacker  
Dale & Valerie White

### ***Homer McDonald***

Jim & Jane Link  
Kevin & Mary McDonald  
Rich Levin & Sally McDonald

### ***Homer & Esteleen McDonald***

Terry Lawrence

### ***Daniel McGrady***

Sam & Bailey Beasley  
Jim & Pat Keller  
Jim & Jane Link  
Renee McGrady

### ***Mark, Susan & Matthew Milach***

Greg & Betsy Bossaer

### ***Claudia Morris***

Bob & Anita Fairchild

### ***John T. Myers***

**to commemorate Veterans Day**  
Rick Kellam & Carol Myers

### ***John & Carol Myers***

Rick Kellam & Carol Myers

### ***Kay Neumayr***

Marcia Boles  
Rick & Jan Turpin

### ***Gail Nixon***

Dr. Robert & Sue Ewbank

### ***Leonard Orr***

Jim & Jane Link  
Marsha Orr

### ***Rita (Carpenter) Peacock***

Rodger & Sue Foster

### ***Kathy Perry***

Nancy Tillotson

### ***Janet Peyton***

Dale & Valerie White

### ***David Poer***

John & Dianne Cotten  
Mark & Janet Hanley  
Mike & Raquel Stultz  
Mark & April Switzer  
Dale & Valerie White  
Covington High School Class of 1972

### ***Dorothy Pritchard***

James & Amy Fawbush

### ***Robert Probst***

Margaret Barker

### ***Rick Randles***

Anonymous  
Cathy Coffman  
John & Dianne Cotten  
Victoria Ford  
Suzy Strawser  
Mike & Raquel Stultz  
Taylored By Grace

### ***Linda Rayburn***

David W. Clingan

### ***Russell Reed***

John & Bev Barry  
Bob & Diane Lyons

### ***Garrett Reynolds***

Darrell & Nyanne Applegate  
Buddy & Janet Crowder  
Randy & Kay Hicks

### ***Dan Riley***

Ronald & Martha Riley

### ***Edward & Mildred Samuels***

Greg & Melinda Samuels

### ***Karen Sare***

Sare – Whitesitt Family

### ***Linda Scott***

Attica High School Class of 1954

### ***Elouise J. Shade***

Jim & Jane Link  
Esteleen McDonald  
Marsha Orr

### ***Doug Shelby***

Eldon & Christine France  
Bob & Darlene Cofoid  
Pat Grubb  
Dick & Sue Holmes  
Jeff & Beth Mason  
Bob & Valarie Maus  
Andy & Brandy Rumph  
Joe & Sharon Sare  
John & Gay Talbert  
Jeff & Joyce Youngblood Trust  
Burkhart Funeral Home, Inc.  
Vermilion County Funeral Directors  
Association, Inc.

### ***Melinda Shepherd***

Constance Joyce La Lena  
Kyle & Jill Mandeville  
Matt & Linda Runyon  
P.J. & Susan Stoll  
Carl Taylor  
Rick & Jan Turpin

### ***Charles Shumaker***

Dale & Valerie White

### ***Brandon Simmons***

Thad & Kara Taylor

### ***Carolyn Stockdale***

Neal & Toni Myers

### ***Jamie Lynn Stockdale***

Jim & Jane Link  
Esteleen McDonald  
Richard Levin & Sally McDonald

## IN MEMORY OF

(Continued from page 21)

### **William A. Swaney, Jr.**

Bob & Suellen Swaney

### **Andrew “Drew” Swanson**

Anonymous  
Brett & Tara Ashley  
Mary Brakley  
John & Marilyn Foster  
Neal & Jennifer Gremore  
Jennifer Kahoun  
Jason & Kathi Leaver  
Joe Riley, Jr.  
Mark Starlin  
Melinda Story  
Ismael Sullivan  
Randy & Lisa Swanson  
Nancy Tillotson  
Kuri Tec Manufacturing, Inc

### **Tallman & Martin Families**

Melanie Long Wrensch

### **Ralph Tillotson II**

Nancy Tillotson

### **Page Lane Townsend**

Dwila Fecker  
Allison Stevens

### **Sandy Tuggle**

Travis & Nancy Tuggle

### **Eric Van Vactor**

Shirley L. Campbell  
Penny Van Vactor

### **J.C. Van Vactor**

Shirley L. Campbell  
Penny Van Vactor

### **Norma Van Vactor**

Shirley L. Campbell  
Penny Van Vactor

### **Mark Walter**

Jennifer Dinsmore  
Barbara McConnell

### **Thomas Gary West**

Margaret Barker

### **Alan White**

Mark & April Switzer  
Dale & Valerie White

### **Bill Williams**

Ryan & Megan Ellmore  
Scott & Nancy Wallace  
Dale & Valerie White

### **Mary Wilson**

James & Amy Fawbush

### **Joshua Witsman**

Logan & Staci Stultz

### **Marilyn Woodrow**

Darrell & Nyanne Applegate  
Jim Clawson  
John & Gay Talbert  
Dale & Valerie White  
Covington High School Class of 1984

### **Tony Wooster**

Ryan & Megan Ellmore & Family

### **Yale Yager**

Dale & Valerie White

### **Coy Scott Zeller**

Linda Zeller

### **Roscoe Zeller**

Linda Zeller

### **Jennie Ziebart**

Paul & Sandy Seyfert

## IN HONOR OF

### **Sherry Bailey**

Dr. Robert & Sue Ewbank

### **Dennis Black**

Robin Marlatt

### **Marcia Boles**

Tom & Mary Schott

### **Carolyn Foster**

Darrell & Tresha Meadows

### **Ann Harrison**

Gene & Helen Willingham

### **Aaron Kellam**

**to commemorate Veterans Day**

Rick Kellam & Carol Myers

### **A.J. Kline**

Stan & Sally Hogsett  
Sheila Rogers

### **Jeff Kline**

Stan & Sally Hogsett  
Sheila Rogers

### **Jennifer Hogsett Kline**

Stan & Sally Hogsett  
Sheila Rogers

### **Tyson Kline**

Stan & Sally Hogsett  
Sheila Rogers

### **Esteleen McDonald**

Rich Levin & Sally McDonald

### **Drew & Tamiko McGurk**

Kyle McGurk

### **Jan McGurk**

Shannon McGurk

### **Shannon McGurk**

Kyle McGurk



### **Tom & Jan McGurk**

Kyle McGurk  
Shannon McGurk

### **Lynnette McMahan's birthday**

Ellen McMahan

### **Lowell & Betty Osborn Family- children, grandchildren, and great grandchildren**

Lowell & Betty Osborn

### **Duane & Phyllis Woodrow**

Geoff & Tracy Canfield  
Jeremy & Trudy Link  
Owen & Mackenzie Randolph  
Brison & Madison Scott

*Western Indiana Community Foundation truly appreciates every gift received from our generous donors. If we neglected to mention your contribution for the time period listed, please accept our sincere apologies for the oversight.*



## **Types of Funds at the Community Foundation**

Each fund type allows a community, donor, or nonprofit to accomplish its goals. See which fund type best fits your charitable intentions.

### **Unrestricted Funds**

Unrestricted Funds give community members a way to support basic needs and enhance the quality of life in their hometown. You make a gift to the Community Foundation with no suggestion or preference as to which organization the grants are to be made. These are the largest grant-making funds at each of the Community Foundations. Grants are made from these funds to support worthwhile projects, programs, and nonprofit organizations within each Foundation's geographic territory.

### **Field of Interest Funds**

Field of Interest Funds are similar to Unrestricted Funds, except the individual has specified an area (history, education, arts, etc.) in which grants will be given..

### **Designated Funds**

Designated Funds support one or more specific charitable organizations selected by an individual when they create a new fund and benefit specific charitable organizations by the donor. With a Designated Fund, you can support organizations that are important to you for generations.

### **Scholarship Funds**

Scholarship Funds benefit Fountain County students pursuing higher education. As a scholarship fund holder, you will set the focus of the scholarship and application parameters. WICF will handle all the paperwork necessary to comply with federal regulations and issue scholarship checks.

### **Agency Endowment Funds**

Agency Endowment Funds are a form of Designated Fund that benefits only one specific organization. These funds allow nonprofit agencies the ability to build a continual and dependable stream of future income to support their operations. They also provide a long-term funding source for nonprofit organizations that create them.

# Donors & Contributors

In partnership with our donors (individuals, businesses, corporations, churches, service organizations, and civic clubs), the Community Foundation awards several thousand dollars in grants each year to a broad range of charitable organizations in our community. This support is provided through a variety of endowment and pass-through funds including: arts, culture, historic preservation, faith, parks and recreation, land protection, education and scholarships, health and human services, children and youth, seniors, and more.

Each donation is credited to the appropriate Foundation or fund as requested by the donor.

We received support from the following donors and contributors from from October 1, 2024, to March 31, 2025.

|                             |                           |                                  |
|-----------------------------|---------------------------|----------------------------------|
| Tracy & Juanita Acord       | Ron Chapman               | Carolyn Foster                   |
| Adams & Harrington Families | Steve & Cheryl Clark      | Mark & Pat Foster                |
| Bonnie Adams                | Jim Clawson               | Eldon & Christine France         |
| Troy & Jennifer Alexander   | Kathryn Clem              | Warner & Carol Freese            |
| Brad & Monica Allen         | Yvonne Clem               | Benjamin & Bethany Frost         |
| Dave & Jeannie Allen        | David W. Clingan          | William C. Fry                   |
| Jon Almeras                 | David & Suzanne Coffing   | Bill Fulton                      |
| Penny Anderson              | Matt Commons              | Chris & Yvette Gayler            |
| Dailynn Andrews             | Mike & Eva Cotten         | Ken & Rhonda Gentrup             |
| Anonymous                   | John & Barbara Crain      | Mikel & Sharon Grady             |
| David & Patricia Bardos     | Michael & Beth Cripe      | Pat Grubb                        |
| Josh & Misty Barnett        | Phil & Ruth Ann Crowder   | Bob & Laura Hacquet              |
| John & Bev Barry            | Don & Frances Cumbow      | Andy & Lexxi Haddock             |
| Sam & Bailey Beasley        | Mike & Jackie Cundiff     | Randy & Jane Haddock             |
| Grace Becker                | Allyson Current           | Ross & Marilyn Hankins           |
| Greg & Kris Bell            | Mulindwa Daaja            | Dailynn Hardy                    |
| Martha Bell                 | Carolyn Davis             | Alison Harmeson                  |
| Matt & Molly Bennett        | Robert & Sue Ann Davis    | Ted Harris                       |
| Michael & Cora Bennett      | Brian & Elizabeth Delp    | Ann Harrison                     |
| Sharon Bennett              | Adam & Kaitlyn Dennis     | Holly Harrison & Andrew Neal     |
| Virginia Bennett            | Jeff & Diane Dennis       | Julia Harshbarger                |
| Dennis & Laura Black        | Edward D. DeSutter        | Will & Jillian Hawks             |
| Connie Blacketter           | Phil DeSutter             | Bob & Amy Hay                    |
| Forest & Glenda Boling      | William D. DeSutter       | Damon & Julia Hegg               |
| Lee & Robin Boling          | Pete & Connie Dillman     | Jim & Barb Hegg                  |
| Bob & Sharon Brewer         | Kurt & Jenifer Dinsmore   | Marlon & Marian Heideman         |
| Terry & Micki Brock         | David & Cynthia Eberhardt | Russell & Vicki Hendrickson      |
| David Brown                 | David & Becky Ebershoff   | James & Janice Hershberger       |
| Patricia Brown              | Dennis & Jan Edgington    | Amy Herzog                       |
| Roger & Diane Brown         | Greg & Terri Edwards      | Roger & Linda Herzog             |
| Christine Brunner           | Joanne Edwards            | Dan & Karlie Hesler              |
| Mike & Ashlee Cadman        | Ryan & Megan Ellmore      | Sherrill & Susan Hesler          |
| Chuck & Debbie Callahan     | Eric & Kelly Engle        | Ellen Hess                       |
| Roger & Cathy Capps         | Donna Fathauer            | Bradford & Debra Hiatt           |
| Cheryl Carlson              | Ben & Cindy Ford          | James Hoagland & Glenna Matthews |



|                           |                            |                              |
|---------------------------|----------------------------|------------------------------|
| John M. Hoagland          | Kyle & Jill Mandeville     | Jane Phillips                |
| Stan & Sally Hogsett      | Reed & JoAnn Mann          | Scott & Tina Pickel          |
| Christine Holmes          | Gerald & Mary Martin       | Karmen Pithoud               |
| Steve & Dorothy Holmes    | Kevin & Debbie Martin      | Lloyd & Joyce Pohlschneider  |
| Estate of Linda Holycross | Terri Martin               | Dan & Erin Poll              |
| Clifford & Lisa Hornback  | Mike & Amy Maynard         | Seth & Andi Pollert          |
| John & Julia Howard       | Cynthia McDonald           | Taylor & Katherine Powell    |
| Charles & Janice Hudson   | Esteleen McDonald          | David & Billie Pummill       |
| Rosemary Huff             | Phyllis McDonald           | T.J. & Jenny Ragan           |
| Michael & Cathy Hunt      | Renee McGrady              | Darien & Sharon Rainey       |
| Dr. Jon Inman             | Drew & Tamiko McGurk       | Refugio & Sherri Ramirez     |
| Glenn & Yolanda Iungerich | Kyle McGurk                | Kerry & Angie Randles        |
| Blake & Renata Jackson    | Tom & Jan McGurk           | Hunter Reece                 |
| David H. Jacobs           | Terry & Pauline McMasters  | Steve & Susan Reynolds       |
| Jerry & Carolyn James     | Kevin & Debbie Mericle     | Cindy Ricketts               |
| Richard & Linda Jenkins   | Russ & Debbie Meuser       | William A. Ringer, MD        |
| Cynthia Jones             | Aleen Miller               | Eric & Karen Roberts         |
| Kevin & Rebecca Jones     | Bill Miller                | Duane & Nancy Roderick       |
| Ron & Karen Johnson       | Steve & Karen Milligan     | Martin & Sophia Rosa         |
| Bunny Jordan              | James & Susan Miner        | Rick & Terri Ross            |
| Jim & Dee Jordan          | Dick & Ann Minnette        | Teresa Ross                  |
| Mary Jordan               | Masakazu & Mary Pat Miyagi | James & Kimberly Sandquist   |
| Curt Keeling              | Robin & Peg Montgomery     | Joe & Sharon Sare            |
| Joyce Keeling             | Raoul Moore                | Henry & Kathryn Schmitt, Jr. |
| Dolores Keller            | John & Kathy Morgan        | Jim & Debbie Scrogam         |
| Tim & Amy Kemple          | Marlene Muddell            | Stanley & Mary Sell          |
| Peggy Kenworthy           | Louise Myers               | Paul & Sandra Seyfert        |
| Jane Kereven              | Carla Newnum               | John & Nancy Shambach        |
| Laurie Kiger              | Jeffrey Newton             | Bob Shepherd                 |
| Leah Kirkpatrick          | Mike & Marsha J. Nolot     | Daniel & Cathy Shumaker      |
| Paul & Karen Kirkpatrick  | Irene Norman               | Ken & Valli Shumaker         |
| Susan Kirkpatrick         | Warren Opperman            | Angie Slinker                |
| Jeff & Jen Kline          | Marsha Orr                 | David & Lee Ann Bane Smith   |
| Tyson Kline               | Tracy & Colleen Osborn     | Linda Smith                  |
| Amanda Krenson            | Wayne Oteham               | Sabrina Smith                |
| Charles & Terri Kriston   | Leonna Paddock             | Curt Snyder                  |
| Mary Ann Kruse            | Steve & Judi Paloncy       | Ryan & Cari Sowers           |
| John Larson               | Richard Parker             | Jordan & Jessica St. John    |
| Duane & Donna Lathrop     | Kristin Patel              | Bill & Janet Stonecipher     |
| Steve & Dina LeCleir      | Donald & Dorothy Payne     | Suzy Strawser                |
| Chuck & Denise Ligler     | Dennis & Staci Payton      | Mike & Raquel Stultz         |
| Frankie & Robin Lucas     | Susan Perkins              | Kent Suiters                 |
| Alan & Sharon Lynch       | Suzanne Phelps             | Mike & Loretta Suiters       |

## DONORS & CONTRIBUTORS

(Continued from page 25)

|  |  |  |
|--|--|--|
| Bob & Suellen Swaney                   | CentreBank   | Kappa Kappa Kappa, Inc.-Fowler Omicron Chapter |
| Andy & Kelly Taylor                    | Charities Aid Foundation America                         | Landmark Apostolic Church-Covington            |
| Thad & Kara Taylor                     | Christian Union Church-Covington                         | Locust Grove Community Center, Inc.-Fowler     |
| Nancy Tillotson                        | Coal Creek Ranch-Covington                               | Maxwell Farm Drainage                          |
| Jeff & Lisa Troike                     | Coheenians, Inc.   | MB Music & Sound                               |
| James & Jane Turpen                    | Companion Care, LLC                                      | New Century Church-Veedersburg                 |
| Belinda Van Duyen                      | Covington Business Association                           | Newtown Community Church                       |
| Gayla Verhey                           | Covington United Methodist Church                        | Orion New Generation, LLC                      |
| Frank & Belinda Vickery                | Covington United Methodist Women                         | Overpass Enterprises                           |
| Ryan & Samantha Vickery                | Covington Woman's Club                                   | Oxford United Methodist Church Women           |
| Gary & Lucille Vollmer                 | Darin Odle's Special Touch                               | Pepsico Silicon Valley Community Foundation    |
| Paul & Nancy Wagner                    | Ellipsis Ventures, LLC                                   | Phillips Law Offices-Chicago                   |
| Rodney & Jill Wallace                  | First Baptist Church-Covington                           | Pine Village Bible Church, Inc.                |
| Anthony & Jacqueline Ward              | First Church of Christ-Covington                         | Sanders Funeral Care, LLC-Crawfordsville       |
| Bill & Barb Ward                       | First Church of Christ-Friendly Circle Class-Covington   | Second Church of Christ-Danville               |
| Dennis & Sue Ann Weber                 | First Lutheran Church of Attica                          | St. Joseph Catholic Church-Covington           |
| Keal & Karen Webster                   | Forever Grace Church-Otterbein                           | Steel Grip, Inc.                               |
| Mike & Barbara Weldon                  | Fountain Central Mustang Club                            | Steel Tech Enterprises, LLC                    |
| Joe & Sandra Whitaker                  | Fountain County Extension Homemakers                     | Stringtown Church of God                       |
| Robert & Ireta White                   | Fountain Warren FOP Lodge 200                            | Sunset Chapel                                  |
| Dorothy Williams                       | Fountain Warren Retired Teachers                         | Sunset Funeral Home                            |
| Richard & Marsha Woodard               | Fowler Christian Church                                  | T-4 Disposal                                   |
| Duane & Phyllis Woodrow                | Fowler State Bank  | Tanner & Associates Insurance, Inc.            |
| Bob & Bonnie Wright                    | Fraternal Order of Eagles – Aerie # 10052 Batesville, IN | The Blackbaud Giving Fund                      |
| Mike & Penny Wriighthouse              | Gessie Church Incorporated                               | The Fountain Trust Company                     |
| Sean & Mariah Zabriskie                | Greenways Foundation, Inc.                               | The Landing on Division                        |
| Robert & Linda Zerbe                   | Greg Clingan Auction & Real Estate, LLC                  | Treasurer of Warren County                     |
| Bill & Diane Zimmerman                 | Harrison Steel Castings Company                          | VFW Post #2395                                 |
| 1Source                                | Hi-Temp Refractories                                     | VFW Post #2395 Auxiliary                       |
| America Online Giving Foundation       | Hickman Heights Christian Church-Williamsport            | Wabash Chapel-Covington                        |
| American Family Insurance              | Historic Landmarks of Fountain County                    | Wabash River Valley Crop Insurance, LLC        |
| Attica American Legion Post #52        | Hoosier Heartland State Bank-Crawfordsville              | Wabash Valley Bible Baptist Church-Attica      |
| Attica Evangelical Presbyterian Church | Huston Electric, Inc.                                    | Wallace Christian Church                       |
| Attica Hardware & Lumber Corporation   | Independence River Spring Church-Attica                  | Warren County Community Foundation             |
| Attica High School Class of 1954       | Indiana Landmarks  | West Lebanon Christian Church                  |
| Autumn Trace Management                | International Paper-Cayuga                               | Williams Chapel-Williamsport                   |
| Backwoods Graphics, LLC                | JAFco, Inc.  | Williamsport Christian Church                  |
| Benson Chapel Church, Inc.-Covington   | Judyville Church, Inc.-Williamsport                      |  |
| Budventures, LLC                       |  |  |
| Burkhart Funeral Home                  |  |  |

*Western Indiana Community Foundation truly appreciates every gift received from our generous donors. If we neglected to mention your contribution for the time period listed, please accept our sincere apologies for the oversight.*



# Giving Made Simple

Western Indiana Community Foundation manages a variety of endowment and pass-through funds for the benefit of its citizens. Listed below are just a few of the nearly 375 funds under our management. To see a full listing visit our website at: [www.wicf-inc.org](http://www.wicf-inc.org).

## Memorial & Tributes

A gift to any fund at the Foundation can be made in memory of someone or in honor of an achievement, a birthday, anniversary or accomplishment.

### Online Donations

Your online donations through our website are a convenient, secure, and fast way to give.

### Checks or Cash

Simply use the tear-off form on this page to make your donation to any of the funds below or to any of our other charitable funds with which you might be familiar.

## Community Funds

These are the largest grant-making funds at each of the Community Foundations. Grants are made from these funds to support worthwhile projects, programs, and nonprofit organizations within each Foundation's geographic territory. See pages 6-9 for a listing of grants made in the past few months from each affiliate's Community Fund.

- ▶ Attica Unrestricted Fund
- ▶ Covington Unrestricted Fund
- ▶ Southeast Fountain Unrestricted Fund

## Scholarship Funds

Donations to each of these funds are invested and a portion of the earnings are used for awarding scholarships to students from Attica, Covington, and Fountain Central High Schools.

- ▶ Attica Scholarship Fund
- ▶ Covington Scholarship Fund
- ▶ Southeast Fountain Scholarship Fund



Simply scan the QR code to make a donation to a fund of your choice.

## Western Indiana Community Foundation



Please send this form and your contribution to:

Western Indiana Community Foundation  
P.O. Box 175  
Covington, IN 47932

Name:

Address:

Email :

Preferred phone number: (\_\_\_\_)\_\_\_\_\_

Enclosed is my contribution of:

- ☐ \$2,500    ☐ \$1,000 to establish a  
☐ \$1,000                      new named fund  
☐ \$500  
☐ \$250  
☐ \$100                      ☐ Please contact me about  
☐ \$50                              making a gift of stock  
☐ \$25

\$\_\_\_\_\_ (other amount)

My contribution is to support projects for:

- ☐ Attica Community Foundation  
☐ Covington Community Foundation  
☐ Southeast Fountain Community Foundation  
☐ Name of Fund or Field of Interest:

Gifts will be placed in an unrestricted fund unless otherwise noted.

My contribution is:

- ☐ in honor of (or)    ☐ in memory of

\_\_\_\_\_  
(name)

Please Notify:  
Name:

Address:

- ☐ I would like to receive more information about establishing a fund in my family's name.

WESTERN INDIANA COMMUNITY FOUNDATION  
PO BOX 175  
COVINGTON, IN 47932  
CHANGE SERVICE REQUESTED

NON-PROFIT  
ORGANIZATION  
US POSTAGE PAID  
INDIANAPOLIS, IN  
PERMIT NO. 9059

# **Western Indiana Community Foundation**



*Serving the communities of  
Attica, Covington, Kingman,  
Wallace, Hillsboro, Newtown,  
Mellott, Veedersburg, and  
those in between.*

**Attica Community Foundation**  
P.O. Box 161  
Attica, IN 47918  
(765) 793-0702      Fax: (765) 793-0703  
Email: [acf@wicf-inc.org](mailto:acf@wicf-inc.org)

**Covington Community Foundation**  
P.O. Box 175  
Covington, IN 47932  
(765) 793-0702      Fax: (765) 793-0703  
Email: [ccf@wicf-inc.org](mailto:ccf@wicf-inc.org)

**Southeast Fountain  
Community Foundation**  
P.O. Box 95  
Veedersburg, IN 47987  
(765) 793-0702      Fax: (765) 793-0703  
Email: [sfcf@wicf-inc.org](mailto:sfcf@wicf-inc.org)